

TRUNE⁸⁰
EVOLUTIONARY AUDIO



REALITY IS A PRIVATE MATTER



TRUUNE⁸⁰

CONNECTED HOME ORGANIC STEREO LOUDSPEAKERS

With the coming of the Truune loudspeakers the high-end quality has become much more affordable. Proudly introducing the one-of-a-kind Truune loudspeakers, made from studio-grade components that represent the highest possible level of distortion-free sound experience at an affordable cost compared to products in the same class.

TOUCH IT. HEAR IT. CARESS IT. LOVE IT. REPEAT.

Truune 80 the comfort senses of true audiophiles, engineers, designers and naturalists. Four times the strength of its predecessor Truune 8. They are assembled to deliver a faithful reproduction. As a result, you get high-end streaming speakers resonating with pure sound for each audio gourmet.

Handcrafted and designed to bring out the supreme in sound and appearance.

Our attraction towards texture goes along with our respect for natural materials. The sides are made of walnut veneer sandwich construction, giving each speaker individuality with a unique finish look.

They will seamlessly connect with you and all your devices while requiring no additional box.



TRULINE 80

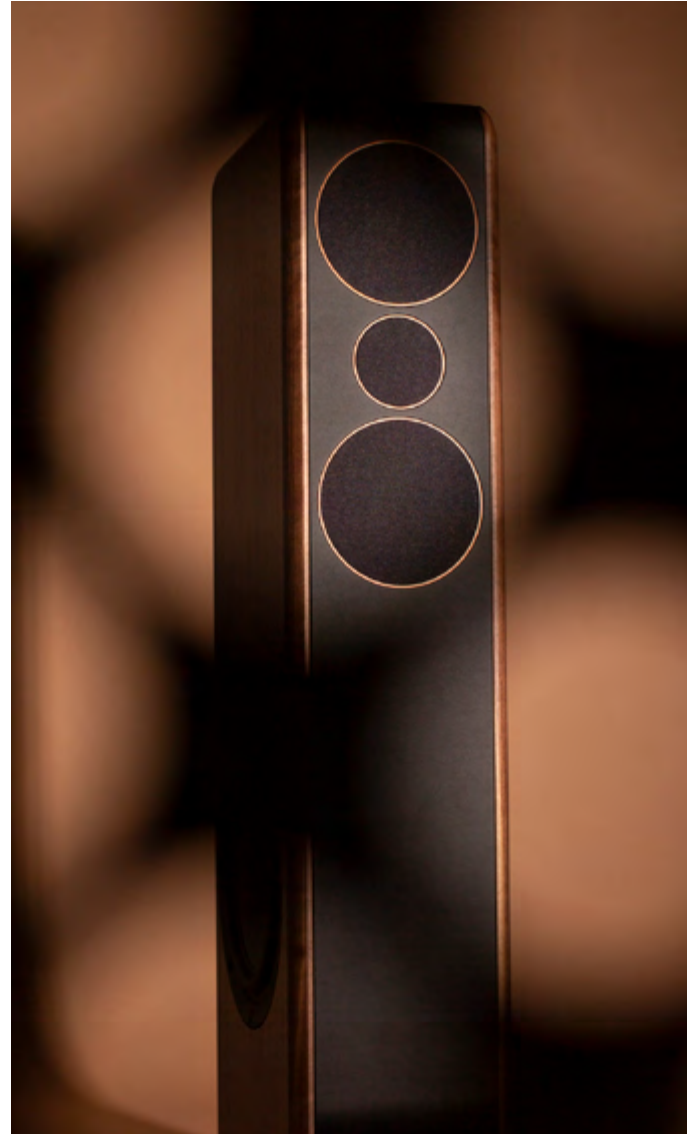


LONGEVITY IS TRUE SUSTAINABILITY

The idea of evolutionary audio speakers originated as an invention that would solve a large number of consumer electronics which had lost their way over time and had become morally obsolete.

We longed to produce a speaker with an indefinite lifespan. So, we developed a revolutionary system for fast and easy hardware upgrade, allowing us to seamlessly upgrade the speaker at your home with the latest technology. Thus, the arrival of the latest trends in the audio industry will no longer create additional waste.

With Truune speakers, you get a timeless product that will always be up-to-date whatever the future innovations may bring.



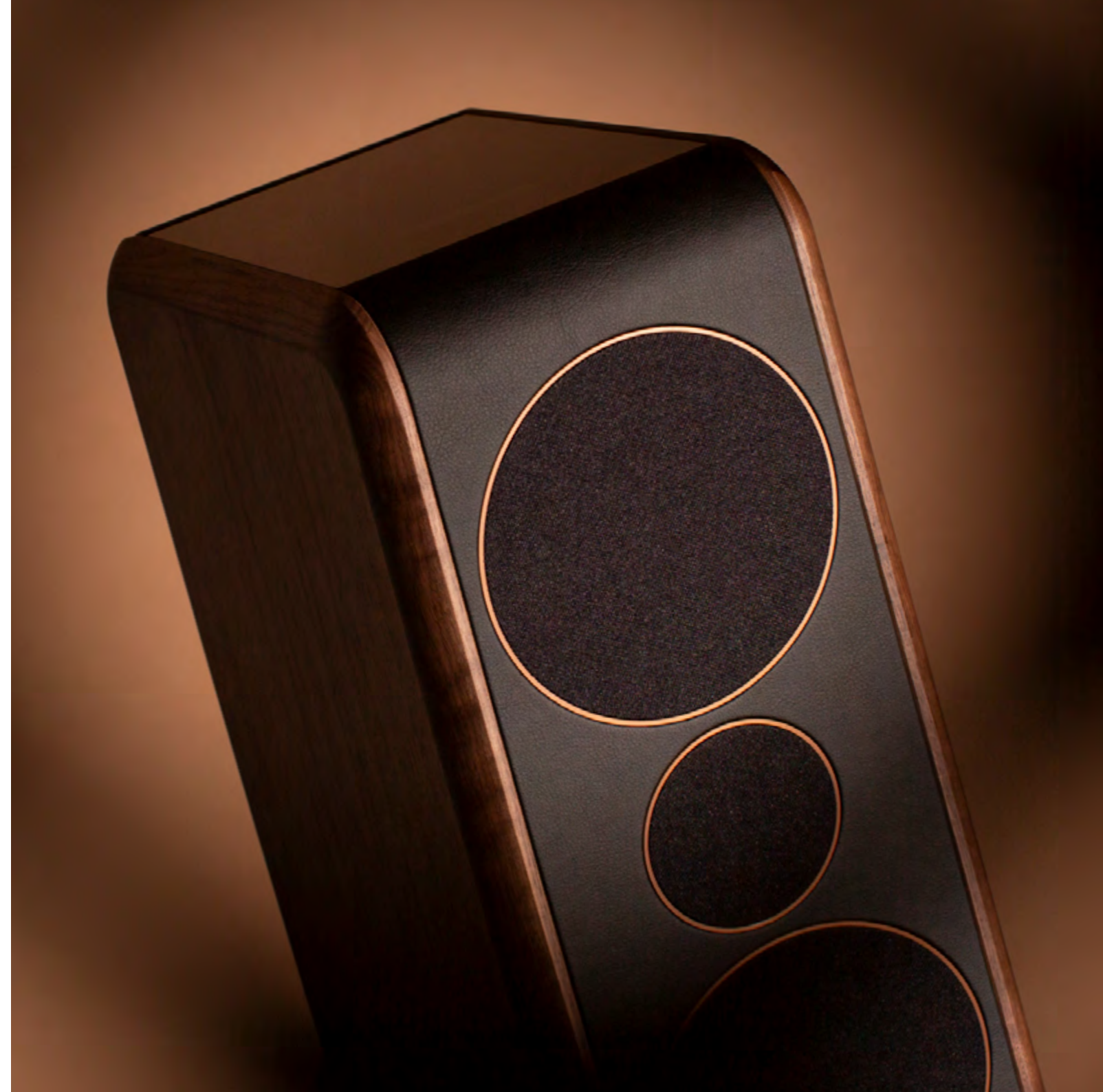
MINIMAL ECOLOGICAL SMART

Assembled by certified sustainable materials. Truune speakers are in all ways ecological, ethical and most importantly environmentally conscious.

We leave minimal waste and also minimal carbon footprint because 99 percent of production is carried out within a 100 kilometers of our headquarters.

The organic shape with sides made of a walnut tree, bio leather covering and potato starch fiber lining gives each speaker a unique look.

No Shortcuts, only the best materials





DIGITAL TO ANALOG FILTERING

Audiophile-grade components built into the entire audio path from decoding, resampling to signal amplification.



ECO-FRIENDLY

The organic look, with side panels made from solid walnut wood, eco-leather upholstery and potato starch fiber lining together create the most eco-friendly audio system of all time.



EASY CONTROL

It's simple. All you need is your smartphone to control the system.



ENERGY EFFICIENT

Custom energy efficient system with all circuits in one board.



EVOLUTIONARY ELECTRONICS

Long-lasting product with quick and easy hardware and software upgrades.



SUPERIOR DESIGN

Timeless design perfect in each and every detail by Gabriel Stark.



INSTANT WIRELESS CONECTIVITY

Stream your favorite music instantly with uninterrupted audio. Truune 8 works effortlessly with your preferred music services.



HIGH COMPATIBLE

Fully compatible with all your home AV devices.



SOUND

Drivers

1" silk soft dome tweeter
2 x 5" natural fibre midwoofer
10" hard paper cone woofer

Frequency range

27 Hz - 20kHz, -3dB

Amplifier

4 x 250W Audiophile
Hypex n-Core - THD
distortion 0.0015 / 1W

High-End DAC

2x Wolfson WM8742 S / N ratio -123 dB

Sample Rate Converter

digital interpolation
and upscaling up to 192kHz

Digital Audio Processor

Sigma Delta 56-Bit with switchable 10-band equalizer

High-end Air coils and Capacitors

Audiophile Jantzen Audio
crossover components

Midbase loudspeaker chassis

CCAW voice coil (Aluminium copper coating) for lowering
of moving mass to increase sensitivity and detail

Ultra linear neodymium silk dome tweeter
with optimized geometry

Thermal /overload protection

Stark SDC self-dumping cabinet system

which, by means of thoroughly designed
internal bracing and flexible joints between
certain parts, is able to correct specific
unwanted mechanical resonances that arise
in every acoustic system.

Environment requirements

Recommended Room Size
>30 m²
Maximum relative humidity
85% non-condensing
Ambient temperature during
operation 0 - 50 ° C

DESIGN

Designed and created by

Gabriel Stark

Dimensions

Height: 1140 mm
Width: 215 mm
Depth: 362 mm

Weight

82 kg pair without boxes
and cables, net product weight

Materials

Walnut wood side walls
Glass touch panel
Eco leather
Lining made from potato starch

POWER

Power supply

Auto switching power supply 115 - 230V

Power consumption

Standby < 2 wat
Network standby 4 wats
Idle 40 wats
Typical playback (80dB @ 1M) 42 wats
Maximum power consumption 1300 wats

CONNECTIVITY

Inputs and Outputs

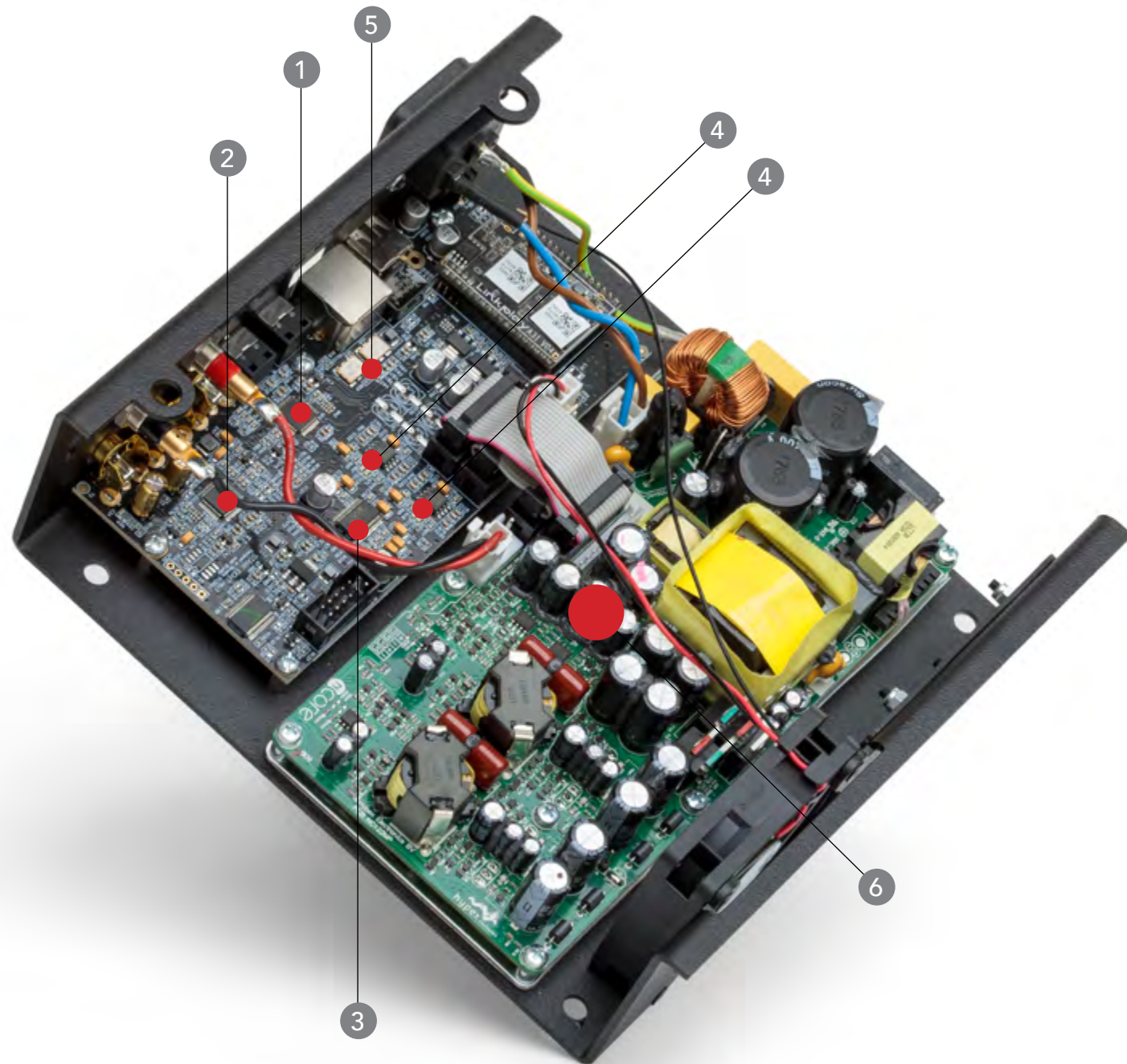
Bluetooth 5.0
Wi-Fi - WLAN 2.4 GHz
IEEE 802.11 b/g/n
2 x digital optical
1 x digital RCA
1 x stereo analogue RCA
1 x USB max. 1A
1 x Stark link - communication
port for controlling other devices

Streaming Services

AirPlay
Tidal
TuneIn
Spotify Connect
DLNA

Remote control

Smart device (Phone or Tablet) – Android/IOS
Simple IR remote controller



1 Sample Rate Converter

The SRC4382 is a highly-integrated CMOS device designed for use in professional and broadcasting digital audio systems. It converts the digital interpolation and upscaling of digital input signals up to 192kHz.

2 Digital signal processor (DSP)

ADAU1701 is mostly found in high end studio equipment. The signal processing is done in full 56-bit, double precision mode, resulting in very good low level signal performance.

The signal processing includes 10 band equalization, crossover, bass enhancement, multi-band dynamics processing, delay compensation and loudspeaker compensation.

3 Digital to analog converter

2x Wolfson - WM8742 is a very high performance converter designed for professional recording systems and high specification players.

4 Operational amplifier

4x NJM2068 high performance, low noise dual operational amplifier used in DAC differential analog output filter.

5 2 x high precision crystal oscillators

For low jitter while digital decoding and resampling

6 Audiophile digital amplifier module

Hypex n-Core 2x125W (Truun8) or 4x250W (Truune 80) is developed for Monitor loudspeakers for recording and mastering studios and Audiophile power amplifiers for professional and consumer use.

BEHIND THE SCENE OF A ONE OF A KIND AURAL EXPERIENCE

All-in-one home speakers expertly tuned to give you studio-quality sound at home.

Truune takes active speaker technology with built-in amplifier design to new heights. It features audiophile-grade components built into the entire audio path from decoding, resampling to signal amplification.

They use an audio filtering method based on an additional advanced analog filter which smooths the audio signal behind the digital amplifier and sends it to the speaker chassis, so you can enjoy a true-to-analog audio experience.



CUSTOMISATION OPTION



WOOD: WALNUT LEATHER: BLACK / CAMEL LINING: MISTIC BROWN
GRILL CLOTH: BLACK / ANTHRACITE GREY

Each and every Truune speaker is a masterpiece.

We are not a toy, we are serious speakers, in each detail, in every way, tuned into our maximum performance, crafted for generations to listen.

What we do, we do thoroughly. And we stand for it.

TRULINE 80

PLENTY OF PLAYFUL COLOUR COMBINATIONS



MIX & MATCH OVER AND OVER

Are you looking for a new and creative way to add personality to your speakers? With endless color variations you can have a lot of fun. Think of any color, you'll get it.

Magnetic attachment makes replacing the circle linings very easy and straightforward.





truune.com